

# 99th State FFA Convention & Expo

MAY 6-7, 2025

FFA is an integral part of the Agricultural Education Division  
of the Oklahoma Department of CareerTech Education

# INSURE YOUR LIVESTOCK

## Protecting Your Purchases.

For Agriculturalists. By Agriculturalists.

Life doesn't always go as planned, especially when it comes to livestock.

Insure Your Livestock has you protected with livestock insurance *designed with you in mind.*

### Insurance Coverage Available

- Donors, Cows, and Bulls
- Steers
- Swine
- Sheep
- Goats
- Pasture
- Cargo
- Feedyards
- Equine

Complete and submit the necessary applications to receive a quote.

### Our Agents



**Jimmy James**  
580-481-0955



**Emilie James**  
580-481-0897



**Jace James**  
580-481-0927

1220 N. Main St, Altus, OK 73521  
580-480-0049 | [www.insureyourlivestock.com](http://www.insureyourlivestock.com)  
[livestock@storehouseinsurance.com](mailto:livestock@storehouseinsurance.com)



# FFA is one of seven co-curricular student organizations affiliated with Oklahoma CareerTech



- › Welding
- › Public Speaking
- › Record Keeping
- › Time Management
- › Business Management
- › Communication Skills
- › Interviewing
- › Livestock Care

**KAYLA POLING**  
2024-2025  
State FFA  
President

## CareerTech Student Organizations

In FY 24, **107,985** students learned important leadership skills as members of co-curricular CareerTech student organizations.



[oklahoma.gov/careertech/students/organizations](https://oklahoma.gov/careertech/students/organizations)

Education that  
**works** for you



**OKLAHOMA**  
CareerTech

OKLAHOMA'S WORKFORCE LEADER

# YOUR STATE FFA *Officers*

**KAYLA  
POLING**

President  
SILO



**COOPER  
KLINE**

Secretary  
NORTH ROCK CREEK



**AUBRIE  
McENDOO**

Reporter  
STILLWATER



**ANNA JO  
HELLING**

Northeast Area  
Vice President  
INOLA





## CASYN LARMAN

Northwest Area  
Vice President  
MULHALL-ORLANDO



## GRACE WRIGHT

Central Area  
Vice President  
STRATFORD



## TITUS MONTGOMERY

Southeast Area  
Vice President  
RED OAK



## CALEB AMES

Southwest Area  
Vice President  
DUKE

# GENERAL *Information*

**INFORMATION** ▶ If you need assistance inside the Convention, have your questions answered at the registration desks near the east main entrance, BOK Arena. Your key contact at the Registration desk is Kathie Short, cell: 405-880-5413.

**PHOTOGRAPHER** ▶ Final Drive Photography will serve as the official convention photographers. Contact: Final Drive Photography, PO Box 1262, Kingfisher, OK 73750. Kari Cooper, kari@finaldrivephotography.com, 405-227-3373

**HEADQUARTERS HOTEL** ▶ State staff, officers and special guests will stay at the DoubleTree by Hilton, 616 W. Seventh St., 918-587-8000, in downtown Tulsa.

**MEDIA ROOM** ▶ The Media Room is on the first floor, northwest hallway, of BOK Arena. Your key contact in the Media Room is Dr. Shelly Legg, cell: 405-614-0302. All convention media releases and photos can be found online at **ffa.okstate.edu**.

**LOST AND FOUND** ▶ Lost articles should be reported and found items delivered to the Registration desk near the main entrance, first floor, southeast corner of BOK Arena. Your key contact for Lost and Found is Kathie Short, cell: 405-880-5413.

**DRESS AND CONDUCT** ▶ People form their first impressions of you and your chapter on your conduct, the way you look and dress and the pride you show by your overall appearance. Proper conduct, together with good grooming and wearing the official FFA jacket properly, will also help build the image of agricultural education and the FFA. Hats and caps are discouraged anywhere inside the facility and are not allowed in the arena or convention center.

**OFFICIAL DRESS** ▶ Official dress is required to be worn by all State FFA Degree recipients, official delegates, proficiency winners, interscholastic winners and other award winners. If these members are not in official dress, they will not be allowed on the convention floor (delegates) or stage (award winners). *We strongly recommend that all current FFA members wear official dress throughout the convention.*

**MULTIMEDIA POLICY** ▶ The Oklahoma FFA Association staff and designees take photos, video or other recordings of participants at the state FFA convention. Please be aware that these photos and videos are for Oklahoma FFA Association use in future brochures, signs, podcasts, promotional videos and ads or on our website. Your attendance at the state FFA convention implies your consent to be photographed, videotaped and recorded for these purposes.

# FOR YOUR *Safety*

**POLICE OFFICERS** ▶ Two Tulsa Police officers are hired by FFA to patrol the venue spaces throughout the two-day convention. The convention center also provides full-time security guards in the facility. Please inform the officers or security guards should you encounter a serious problem or need to report suspicious activity.

**FIRST AID** ▶ In case of illness or accident, FFA members should contact their advisers and go to the First Aid Station, ground level, outside of Section 114, BOK Arena. If an on-site EMT needs to come to the patient, call 918-894-4390. In case of an emergency, dial 911.

**EMERGENCY NUMBERS** ▶ FFA members should know how to contact their chapter adviser using approved communication methods. Other phone numbers that may be used in case of an emergency are:

- ▶ Trevor Lucas, state FFA executive secretary: 580-467-8594
- ▶ Scott Nemecek, state FFA adviser: 918-640-3315
- ▶ BOK Security Center: 918-894-4390

**SAFETY REMINDERS** ▶ For your safety in Tulsa, we encourage you to:

- ▶ Stay in groups when moving about the city and convention center event spaces.
- ▶ Avoid poorly lit areas, alleys and parking lots.
- ▶ Do not leave valuables in vehicles.
- ▶ Leave weapons, including guns and knives, at home.
- ▶ Do not leave your hotel room door open for any reason.
- ▶ Don't answer the door in a hotel room without verifying who it is. If a person claims to be an employee, call the front desk and ask if someone from their staff is supposed to have access to your room and for what purpose.
- ▶ Close the door securely whenever you are in your room and use all of the locking devices provided.
- ▶ Don't invite strangers in your room.
- ▶ When returning to your hotel late in the evening, use the main entrance of the hotel. Be observant and look around before entering parking lots.
- ▶ If you see any suspicious activity, please report your observations to the management.
- ▶ Don't needlessly display guest room keys in public or carelessly leave them at the swimming pool or other places where they can be easily stolen.
- ▶ Check to see that any sliding glass doors or windows and any connecting room doors are locked.



# CONVENTION *at a Glance*

## HIGHLIGHTS SCHEDULE

### Sunday, May 4

- 1:00PM**    **Oklahoma Chorus Leaders**  
(Arvest CC, Grand Hall C)
- 2:30PM**    **Chorus Members First Practice Session**  
(Arvest CC, Grand Hall C)
- 6:00PM**    **Chorus Kick-Off Dinner** (Arvest CC, Grand Hall B)

### Monday, May 5

- NOON**    **Expo Exhibitors Move-In until 6:00PM**  
(Arvest CC, Pepsi Exhibit Hall)
- 6:00PM**    **State Officer, Parent and Staff Dinner**  
(Arvest CC, Grand Hall A)

### Tuesday, May 6

- 7:30AM**    **State Officer Candidate Breakfast**  
(Arvest CC, Grand Hall A)
- 8:00AM**    **Expo Exhibitors Move-In**  
(Arvest CC, Pepsi Exhibit Hall)
- Agriscience Fair Division Winners Setup**  
(Arvest CC, Pepsi Exhibit Hall)
- Chapter Registration Begins**  
(BOK Arena, East Entrance)
- 8:30AM**    **State Officer Candidate Orientation**  
(Arvest CC, Conference Hall C-D)
- Courtesy Corps Orientation**  
(Arvest CC, Conference Hall A-B)
- 9:30AM**    **Pre-Show: FFA Talent Competition**

- 9:45AM**    **CONVENTION OPENING SESSION**  
**Kick-Off Speaker: Gatlin Didier**  
**Agriscience Fair Recognition**  
**Introduction of 2025–26 State Officer Candidates**  
**Official Delegate Business Session**
- ▶ **Roll Call of Chapters**  
(two delegates per chapter)
  - ▶ **Primary Elections for President, Secretary and Reporter**

- 10:00AM**    **Foundation Annual and Board Meetings**  
(Arvest CC, 3A-B-C, Third Floor)
- Expo: Farm Credit Feat. Magician Chad Long**
- ▶ **Open until 6:00PM**  
(Arvest CC, Pepsi Exhibit Hall)
- Alumni Silent Auction Open for Bids**  
(Arvest CC, Pepsi Exhibit Hall)
- NOON**    **Foundation Luncheon** (Arvest CC, Grand Hall A)
- 1:00PM**    **Prepared Public Speaking Contestants Meet**  
(Arvest CC, Legacy Hall, Second Floor)



**1:00PM State FFA Auctioneering Contest Finals**  
(Arvest CC, Pepsi Exhibit Hall, Expo Talent Stage)

**1:15PM Prepared Public Speaking Championship**  
(Arvest CC, Legacy Hall, Second Floor)

**1:15PM Pre-Show: FFA Talent Competition**

**1:30PM SECOND CONVENTION SESSION**  
**Ag-Ed Career Passports**  
**Greetings from Out-of-State Officers**  
**State Officer Parent Recognition**  
**Ag-Ed Teacher Recognition**  
**Future Ag-Ed Teacher Academy Recipients**  
**OYE Academic All-State Scholarship Recipients**  
**Tulsa State Fair Scholarship Recipients**  
**National Chapter Award Recognition**  
**Foundation Chapter Trust Contributors**  
**Announce Run-Off Elections for President, Secretary and Reporter**

**3:30PM OAETA Board Meeting**  
(Arvest CC, 3A-B-C, Third Floor)

**5:00PM Honorary and VIP Banquet**  
(Arvest CC, Grand Hall A)

**6:15PM Pre-Show: FFA Talent Competition**

**6:30PM THIRD CONVENTION SESSION**  
**VIP Award Presentation**  
**Public Speaking Division Winner Scholarships**  
**Honorary State FFA Degree**  
**State President's Retiring Address: Kayla Poling**

**9:30PM Convention Concert (BOK Arena)**  
► **Mason Ramsey**

## **Wednesday, May 7**

**7:30AM Career Development Event Awards Breakfast**  
(Arvest CC, Grand Hall A)

**8:15AM Pre-Show: FFA Talent Competition**

**8:30AM FOURTH CONVENTION SESSION**  
**National Officer Address**  
**New Chapter Charters**  
**Making Things Better Recognition**  
**FFA Creed Presentation: Top 5 State Finalist**  
**WLC Scholarship Presentations**  
**State FFA Interscholastic Recognition**  
**Official Delegate Business Session**  
► **Roll Call of Chapters**  
► **Final Elections for President, Secretary and Reporter (if necessary)**



## CONVENTION AT A GLANCE

**9:00AM Expo: Farm Credit Feat. Magician Chad Long**  
► **Open until 5:00PM**  
(Arvest CC, Pepsi Exhibit Hall)

**Alumni Silent Auction Open for Bids**  
(Arvest CC, Pepsi Exhibit Hall)

**Hospitality Suite for FFA Advisers open until 3:00PM** (Arvest CC, Grand Hall B)

**Southeast Area Officer Elections**  
(Arvest CC, Legacy Hall, Second Floor)

**10:00AM Central Area Officer Elections**  
(Arvest CC, Legacy Hall, Second Floor)

**11:00AM Southwest Area Officer Elections**  
(Arvest CC, Legacy Hall, Second Floor)

**11:45AM Award Winners and Stars Luncheon**  
(Arvest CC, Grand Hall A)

**1:00PM Northeast Area Officer Elections**  
(Arvest CC, Legacy Hall, Second Floor)

**1:15PM Pre-Show: FFA Talent Competition**

**1:30PM FIFTH CONVENTION SESSION**  
**State Adviser Remarks: Scott Nemecek**  
**State Officer School and Community Recognition**  
**State Star Selections**  
**Proficiency and Special Award Presentations**

**1:30PM Alumni Silent Auction Bids Begin Closing**  
(Arvest CC, Pepsi Exhibit Hall)

**2:00PM Northwest Area Officer Elections**  
(Arvest CC, Legacy Hall, Second Floor)

**6:00PM TALENT COMPETITION FINALS**  
Recognize top three FFA chapters contributing to the Alumni Silent Auction

**6:30PM FINAL CONVENTION SESSION**  
**Drawing for New Ford Truck**  
**Chorus Concert**  
**Keynote Speaker: Dave Roevers**  
**Announce Talent Winner**  
**State FFA Degree Ceremony**  
**Presentation of 2025–26 State FFA Officers**

# EXPO

# **WELCOME**

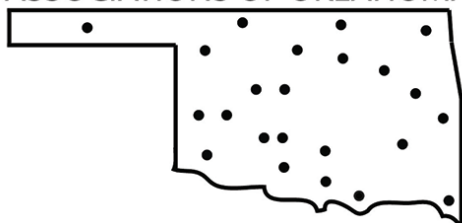
## **State FFA**

# **Convention EXPO**

Sponsored by



**FARM CREDIT**  
ASSOCIATIONS OF OKLAHOMA



**Arvest Convention Center**  
**Pepsi Exhibit Hall (First Floor)**  
**Tuesday 10AM–6PM    Wednesday 9AM–5PM**

**PERFORMING  
EXCLUSIVELY AT THE  
FARM CREDIT EXHIBIT**



**CHAD  
LONG**

## **CHECK ALL OF THIS OUT**



- ▶ More than 125 Exhibitors
- ▶ Alumni Silent Auction
- ▶ FFA Talent Performances
- ▶ Agriscience Fair
- ▶ State FFA Auctioneering Finals
- ▶ College and Career Materials
- ▶ Food Court
- ▶ The OKFFA Gear Store

# EXPO Talent Stage

Sponsored by



## Tuesday, May 6

### 11:00AM

Mable Mathis, Mustang  
Elizabeth Moore, Garber  
Katelyn Reynolds, Marlow  
Alivia Loring, Ringling  
Toby & Kynlee Wren, Warner

### NOON

Urijah Newman, Turner  
Leah Taylor, Shattuck  
Gunnar Harrison & Jax Slade,  
Atoka  
Adler Ball, Chandler

### 1:00PM

State FFA Auctioneering  
Finals

### 4:00PM

Kristofer Revard, Pawhuska  
Kinzey Mowery, Chickasha  
Kaylee & Carter Junghanns,  
Medford  
Chance Kennedy, Edmond

## Wednesday, May 7

### 10:30AM

Landi Coulter, Valliant  
Sage Rector, Salina  
Trinity Ough, Meeker  
Beau Ladd, Cushing  
Autumn Geiger, Piedmont

### 11:30AM

Reagan Moehle, Chandler  
Addison Swift, Adair  
Jaden Patton, Clinton  
Colby Barnes, Balko  
Leah Gardner, Salina

### 12:30PM

Wesley Copeland, Rattan  
Savelina Ofiu, Burlington  
Huntley Kreutziger, Frederick  
Randy Torres, Bluejacket  
CJ Weeks, Ketchum

### 1:30PM

Kalyssa Staggs & John Jones,  
Clinton/Arapaho-Butler  
Sawyer Solomon, Ketchum  
Ryleigh Law, Strother  
Sarah Simmons, Wapanucka  
Kaden Pierce, Frederick

### 2:30PM

Dawson Frizzell, Heavener  
Rylee Ferguson, Mooreland  
Logan Everett, Walters  
Sydney Harris, Verden  
Haleigh Hakes, Hulbert





# STATE FFA *Convention*

## PRE-OPENING SESSION ACTIVITIES

**Tuesday, May 6**

**8:00AM Chapter Registration Begins**

BOK Arena, Southeast Entrance (First Floor)

*Sponsored by  
Oklahoma Farm Bureau*

**Agriscience Fair Division Winners Set-Up**

Arvest Convention Center, Pepsi Exhibit Hall  
(First Floor)

Amanda Hutson, Manager, cell 918-289-4339

*Sponsored by  
Devon Energy  
Noble Research Institute  
OSU Ferguson College of Agriculture*

**8:30AM State Officer Finalist Candidate Orientation**

Arvest Convention Center, Conference Room  
C-D, (First Floor)

**8:30AM Courtesy Corps Orientation**

Arvest Convention Center Conference Room  
A-B, (First Floor)

David Turner, Director, cell 918-521-5120

*Sponsors of the Arm Bands  
Duane Cockrum  
Oklahoma FFA Alumni Association*

**9:45AM Convention Opening Session**

BOK Arena

**10:00AM FFA Foundation Annual Meeting and  
Board Meeting**

Arvest Convention Center, 3A-B-C (Third  
Floor)

Jacey Fye, Executive Director,  
cell 580-467-7403

**10:00AM Expo Open**

**to**

**6:00PM**

Arvest Convention Center, Pepsi Exhibit Hall  
(First Floor)

Clark Long, Director, cell 918-635-5583

*Sponsored by  
Farm Credit Associations of Oklahoma*

**10:00AM Alumni Silent Auction Open for Bids**

Arvest Convention Center, Pepsi Exhibit Hall

# STATE FFA *Convention*

## OPENING SESSION

**Tuesday, May 6**

**9:30AM Pre-Show Media Wall**

*Sponsored by  
Warren CAT*

**Live Video Stream**

*Sponsored this session by  
Hilliary Communications  
Cimarron Trailers  
ONEOK*

**9:45AM “Dear FFA” Video Series**

*Sponsored by  
Lopez Dorada*

**Pre-Show Talent Competition**

*Sponsored by  
Arvest Bank*

Southern Sound Band, Kiowa  
Kaylee Junghanns, Medford  
River Winters, Hooker

**State Officer Video**

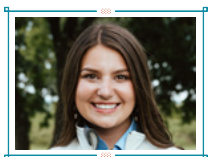
*Sponsored by  
McDonald's of Oklahoma*

**Opening Ceremony**

*Sponsored by  
Oklahoma Farm Bureau*

**Laser LightShow**

*Sponsored by  
AFR Cooperative*



**State President's Welcome**  
Kayla Poling

**Invocation**

Caleb Horne  
Immediate Past State FFA President



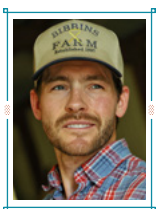
### **“God Bless America”**

#### **State FFA Chorus**

*Sponsored by*  
*Blue & Gold Sausage Co.*  
*Express Employment Professionals*  
*of Oklahoma*  
*Farm Credit Associations of Oklahoma*  
*Muscogee Creek Nation*  
*Oklahoma Kubota Dealers*  
*The University of Tulsa*

#### **Kick-Off Speaker**

*Sponsored by*  
*AFR Cooperative*  
*Bancfirst*  
*CM Truck Beds*  
*Express Employment Professionals*  
*of Oklahoma*  
*John Zink*  
*Muscogee Creek Nation*  
*Oklahoma Ford Dealers*  
*Springdale Tractor Co. of Tulsa*  
*The Chickasaw Nation*



#### **Gatlin Didier**

From Rural Roots  
to Global Impact

#### **Agriscience Fair Recognition**

*Sponsored by*  
*Devon Energy*  
*Noble Research Institute*  
*OSU Ferguson College of Agriculture*

#### **Medals: Second and Third Place**

*Sponsored by*  
*Continental Concrete*

#### **Recognition of State Officer Nominating Committee Student Members**

*Sponsored by*  
*Oklahoma Farm Bureau*  
Taylhor Elmore, Skiatook (NE)  
Brennon Kienholz, Perry (NW)  
Brance Wells, Stroud (C)  
Caden Russell, Coalgate (SE)  
Brooklyn Matlock, Cyril (SW)



## Recognition of State FFA Officer Candidates

### Introduction of State FFA Officer

#### Finalist Candidates

(Speaking and Ballot Order)

#### President

Titus Montgomery, Red Oak  
 Casyn Larman, Mulhall-Orlando  
 Anna Jo Helling, Inola  
 Caleb Ames, Duke  
 Grace Wright, Stratford  
 Cooper Kline, North Rock  
 Creek  
 Aubrie McEndoo, Stillwater

#### Secretary

Hazen Lester, Webbers Falls  
 Marlee Pecha, Timberlake  
 Coy Davidson, Elgin

#### Reporter

Callen Veit, Morrison  
 Laela Begley, Elgin  
 Darla Fesmire, Oklahoma Union

#### Northeast Area

##### Vice President

LeAundre Delonia, Okmulgee  
 Alexander Nuñez, Afton  
 Lynlee McCurry, Salina

#### Central Area

##### Vice President

Taryn McCaa, Elmore City-  
 Pernell  
 Hudson Andrews, Purcell  
 Kale Robison, Cushing

#### Southeast Area

##### Vice President

Abby Snapp, Poteau  
 Jocelyn James, Latta  
 Isabella Whitlock, Silo

#### Southwest Area

##### Vice President

Bonham Eslick, Elgin  
 Kaylee Ferrell, Amber-  
 Pocasset  
 Gage Grimes, Fletcher

#### Northwest Area

##### Vice President

Heath Laubach, Mooreland  
 Davin Budy, Cherokee  
 MaKale Hamil, Taloga

### Delegate Business Session

Roll Call of Chapters

(two delegates per chapter)

Primary Elections for President, Secretary  
 and Reporter

### Closing Ceremony

Announce Session One Talent Finalist



OKLAHOMA

FFA ASSOCIATION



**NextEra Energy Resources is proud to serve as a leading sponsor of the Oklahoma FFA Convention since 2020.**



# STATE FFA *Convention*

## SECOND SESSION

**Tuesday, May 6**

**1:00PM Pre-Show Media Wall**

*Sponsored by  
Warren CAT*

**Live Video Stream**

*Sponsored this session by  
Hilliary Communications  
ONEOK*

**1:15PM “Dear FFA” Video Series**

*Sponsored by  
Lopez Dorada*



**Pre-Show Talent Competition**

*Sponsored by  
Arvest Bank*

Jentry Little, Carl Albert  
Boston Breshears, Oologah  
Noah Buoy, Edmond

**State Officer Video**

*Sponsored by  
McDonald's of Oklahoma*

**Opening Ceremony**

*Sponsored by  
Oklahoma Farm Bureau*

**Laser Light Show**

*Sponsored by  
AFR Cooperative*

**State FFA Chorus**

*Sponsored by  
Blue & Gold Sausage Co.  
Express Employment Professionals  
of Oklahoma  
Farm Credit Associations of Oklahoma  
Muscogee Creek Nation  
Oklahoma Kubota Dealers  
The University of Tulsa*

## SECOND SESSION

### Ag-Ed Career Passports

*Sponsored by*

*AAON*

*Enel*

*ICEV Multimedia*

*Oklahoma Association of Electric  
Cooperatives*

### Greetings from Texas State Officers

Hunter Lawson

Kasadi Neel



### State Officer Parent Recognition

#### FFA Talent

*Sponsored by*

*Arvest Bank*

Ethan Shoulders, Texhoma

### Ag-Ed Teacher Recognition

*Sponsored by*

*Gary Clark, Stillwater, Okla.*

Outstanding Young Teacher

Outstanding Ag-Ed Teacher

Outstanding Ag-Ed Program

Teacher Turn the Key Award



### **Future Ag-Ed Teacher Summer Academy Presentations**

*Sponsored by*

*Oklahoma FFA Alumni Association*

*(six \$1,000 scholarships)*

*Cleo and Opal Collins*

*(one \$1,000 scholarship)*

*David and Rhonda Kimmel*

*(one \$1,000 scholarship)*

*Oklahoma Steel & Wire*

*(one \$1,000 scholarship)*

*Oklahoma Ag Credit*

*(one \$1,000 scholarship)*

*Ernest and Helen Muncrief Memorial*

*(one \$1,000 scholarship)*

*Oklahoma Farm Bureau*

*(one \$1,000 scholarship)*

*Darrell Moser Memorial*

*(one \$1,000 scholarship)*

*Brady Womack/B-5 Show Supplies*

*(one \$1,000 scholarship)*

*Sundowner Trailers*

*(one \$1,000 scholarship)*

*Oklahoma Kubota Dealers*

*(one \$1,000 scholarship)*

### **Program Sponsors**

*Chapman Ranch/Eric and Tracie Chapman*

*Choctaw Nation of Oklahoma*

*Farm Credit Associations of Oklahoma*

*Oklahoma FFA Alumni Association*

*Oklahoma Kubota Dealers*

*OSU Ag-Ed Workgroup*

### **Oklahoma Youth Expo Academic All-State Scholarship Recipients**

### **Tulsa State Fair Ringmaster Scholarship Recipients**





### National Chapter Award Recognition

National Three-Star Chapters

*Sponsored by  
Dearing Printing & Trophy  
Genesis Enterprises LLC  
The University of Tulsa*

Adair	Morrison
Chouteau-Mazie	Mulhall-Orlando
Erick	Navajo
Fairview	Oklahoma Union
Haileyville	Okmulgee
Harrah	Oologah-Talala
Henryetta	Paden
Hinton	Piedmont
Howe	Poteau
Inola	Silo
Jenks	Strother
Ketchum	Stroud
Madill	Thomas-Fay-Custer
Meeker	Vian
Miami	Wilson-Henryetta

### Oklahoma Model of Excellence Chapters

*Sponsored by  
Masonic Charity Foundation*

Meeker  
Okmulgee  
Oologah  
Stroud  
Jenks



### Oklahoma Premier Chapters

*Sponsored by  
NextEra Energy*

### Growing Leaders

Haileyville  
Madill  
Oologah

### Building Communities

Adair  
Miami  
Thomas-Fay-Custer

### Strengthening Agriculture

Adair  
Silo  
Hinton

### FFA Foundation Leadership Interns

*Sponsored by  
Teresa Mueller  
K&P Sharpening/Kendall Brashears  
Vermeer Great Plains*

Emma Catlin, Hinton  
Hadley Ott, Lomega  
Kelton Arthur, Ripley  
Kaden James, Wellston

### Announcement of Run-Off Elections for President, Secretary and Reporter

### Closing Ceremony

Announce Session Two Talent Finalist





# STATE FFA *Convention*

## THIRD SESSION

**Tuesday, May 6**

**6:00PM Pre-Show Media Wall**

*Sponsored by  
Warren CAT*

**Live Video Stream**

*Sponsored this session by  
Hilliary Communications  
Oklahoma Ford Dealers  
Genesis Enterprises LLC*

**6:15PM “Dear FFA” Video Series**

*Sponsored by  
Lopez Dorada*

**Pre-Show Talent Competition**

*Sponsored by  
Arvest Bank*

Cade Wheeler, Afton  
Landri Jones, Weatherford  
Kaden Pliler, Purcell



**Opening Ceremony**

*Sponsored by  
Oklahoma Farm Bureau*

**Laser Light Show**

*Sponsored by  
AFR Cooperative*

**State FFA Chorus**

*Sponsored by  
Blue & Gold Sausage Co.  
Express Employment Professionals  
of Oklahoma  
Farm Credit Associations of Oklahoma  
Muscogee Creek Nation  
Oklahoma Kubota Dealers  
The University of Tulsa*





### **VIP Award Presentations**

Monte Womack

Reina Womack

### **Public Speaking National Qualifiers**

#### **\$1,000 Scholarship**

*Sponsored by*

*AFR Cooperative*

FFA Creed Speaking State Winner

Prepared Speaking State Winner

Extemporaneous Speaking State Winner

### **FFA Talent**

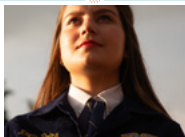
Tyse Buck, Depew

### **Honorary State FFA Degree Ceremony**

*Plaque Sponsors*

*P&K Equipment*

*Davis Farms*



### **State President's Retiring Address**

**Kayla Poling**

The Table

### **Closing Ceremony**

Announce Session Three Talent Finalist



# STATE FFA *Convention*

## Wednesday, May 7

**9:00AM**    **Expo Open**  
to    Arvest Convention Center, Pepsi Exhibit Hall  
**5:00PM**    (First Floor)

*Sponsored by*  
*Farm Credit Associations of Oklahoma*

**9:00AM**    **Alumni Silent Auction Open for Bids**  
OKC Convention Center, Exhibit Hall  
(First Floor)

## AREA OFFICER ELECTIONS

- ▶ Arvest Convention Center, Legacy Hall (Second Floor)
- ▶ Area Roll Call
- ▶ Two delegates from each chapter in the Area
- ▶ Begins promptly at times listed

**9:00AM**    **Southeast Area Vice President  
Officer Elections**

**10:00AM**    **Central Area Vice President  
Officer Elections**

**11:00AM**    **Southwest Area Vice President  
Officer Elections**

**1:00PM**    **Northeast Area Vice President  
Officer Elections**

**2:00PM**    **Northwest Area Vice President  
Officer Elections**



# STATE FFA *Convention*

## FOURTH SESSION

**Wednesday, May 7**

**8:00AM Pre-Show Media Wall**

*Sponsored by  
Warren CAT*

**Live Video Stream**

*Sponsored this session by  
Hilliary Communications  
Cimarron Trailers  
ONEOK*

**8:15AM “Dear FFA” Video Series**

*Sponsored by  
Lopez Dorada*



**Pre-Show Talent Competition**

*Sponsored by  
Arvest Bank*

Gage Wilkerson, Fletcher  
Aubrianna Smith, Collinsville  
Katie Wright, Chandler

**State Officer Video**

*Sponsored by  
McDonald's of Oklahoma*

**Opening Ceremony**

*Sponsored by  
Oklahoma Farm Bureau*

Fairview FFA Chapter  
State Winning Opening Ceremony Team

**Laser Light Show**

*Sponsored by  
AFR Cooperative*

## FOURTH SESSION

### State FFA Chorus

*Sponsored by  
Blue & Gold Sausage Co.  
Express Employment Professionals  
of Oklahoma  
Farm Credit Associations of Oklahoma  
Muscogee Creek Nation  
Oklahoma Kubota Dealers  
The University of Tulsa*



### FFA Creed Presentation Top 5 State Finalists

### Washington Leadership Conference Scholarships

*Sponsored by  
AAON  
AFR Cooperative  
Pete McDaniels Memorial  
Alfred and Anita Green Trust  
Amazon  
Associated Electric Cooperative  
Bart and Karalyn Fischer  
Blue & Gold Sausage  
Choctaw Nation  
CM Truck Beds  
Drs. Eric and Cheryl DeVuyst Courage  
Scholarship  
Craig Foundation  
Dupy Family Trust  
Enel North America  
Energy Transfer  
Ernest and Helen Muncrief Memorial  
Express Employment Professionals  
of Oklahoma  
Farm Credit Associations Of Oklahoma  
Farm Data Services  
Generator Supercenter of Oklahoma  
Genesis Enterprises, LLC  
Georgia-Pacific  
Invenergy  
ITC Great Plains*





### **Washington Leadership Conference Scholarships** *(continued)*

*Sponsored by*

*Jimmie Brownfield Memorial*

*Larry and Helen Harvey*

*Martindale Feed Mill*

*MFA Oil*

*MICROBIOTA+*

*Mike Stephens Memorial*

*NextEra*

*OAETA*

*Oklahoma Center For Nonprofits and  
Chesapeake Energy*

*Oklahoma Farm Bureau*

*Oklahoma Kubota Dealers*

*Oklahoma Wheat Commission*

*Ovintiv*

*Public Service Company of Oklahoma*

*S.E. Area Has Beens*

*Sundowner Trailers*

*T&D Meats*

*Trusted Choice*

*Wendy Stafford-Delorio Memorial*

*Western Equipment*

### **FFA Talent**

*Sponsored by*

*Arvest Bank*

*Claire Allen, Erick*

# UNLOCK YOUR POTENTIAL.



Our commitment to your professional and personal growth sets us apart. In commercial manufacturing, you have numerous career paths to explore.

## **Ready to take the next step?**

Find out more about paid internships and job opportunities at [aon.com/careers](https://aon.com/careers).



## 2025 STATE FFA INTERSCHOLASTICS



*Hosted by  
Oklahoma State University  
Ferguson College of Agriculture*

*Trophies and Medals Sponsored by  
Farm Credit Associations of Oklahoma  
Marathon Oil Company*

*Sweepstakes Trophies  
2nd and 3rd Place Sponsored by  
Keith and Marlene Kisling*

**Medals presented to members of state  
winning teams**

*Sponsored by  
Trusted Choice/Independent  
Insurance Agents*

### LEADERSHIP DEVELOPMENT EVENTS

#### **Animal Science Speech**

*State Sponsors*

*AFR Cooperative  
Stockman's Livestock Order Buying Inc.  
Fye Farms*

*State Winner \$1,000 Scholarship Sponsor  
Genesis Enterprises LLC*

#### **8th Grade Ag Exploration Speech**

*State Sponsors*

*Trent and Sunny Herrmann  
Smith Cattle Company  
McDonald's of Oklahoma*

*State Winner \$1,000 Scholarship Sponsor  
Oklahoma Farm Bureau*

#### **Plant Science Speech**

*State Sponsors*

*Choctaw Nation of Oklahoma  
Ovintiv  
Jacey Fye*

*State Winner \$1,000 Scholarship Sponsor  
SW Crop Insurance*

#### **Natural Resources Speech**

*State Sponsors*

*Johnny McElroy Memorial Trust  
Oklahoma Kubota Dealers*

*State Winner \$1,000 Scholarship Sponsor  
CSS Partners*



## FOURTH SESSION

### **FFA Creed Speaking**

#### *State Sponsors*

*Sirloin Club of Oklahoma*

#### *State Winner \$1,000 Scholarship Sponsors*

*AFR Cooperative*

*National Qualifying Sponsor*

*Dan Flanders Memorial Trust*

### **8-9-10th Grade General Agriculture Speech**

#### *State Sponsor*

*AFR Cooperative*

#### *State Winner \$1,000 Scholarship Sponsor*

*Oklahoma Farm Bureau*

### **Agribusiness Speech**

#### *State Sponsors*

*Steve and Merrie Lynn Vaughan*

*Generator Supercenter of Oklahoma*

*Oklahoma Farm Bureau*

#### *State Winner \$1,000 Scholarship Sponsor*

*John Zink*

### **Agriscience Speech**

#### *State Sponsors*

*Ed and Monica Sneary, Allen, Texas*

*Lee and Jeanette Coker*

*Oklahoma Farm Bureau*

#### *State Winner \$1,000 Scholarship Sponsor*

*2006–2007 State FFA Officer Team*

### **Extemporaneous Speech**

#### *State Sponsors*

*Dr. Scott Stewart*

*Doug and Kathy Harryman*

*Rhett Laubach/YourNextSpeaker.com*

*Vivayic*

#### *State Winner \$1,000 Scholarship Sponsor*

*AFR Cooperative*

#### *National Qualifying Sponsor*

*Steve and Merrie Lynn Vaughan*

### **Agriculture Policy Speech**

#### *State Sponsors*

*Dr. L.D. Barker/Professional Animal Health*

*Bart and Karalyn Fischer*

#### *State Winner \$1,000 Scholarship Sponsor*

*Brent and Jennifer Kisling*

### **8-9th Grade FFA Opportunities Speech**

#### *State Sponsors*

*Noble and Mary Sokolosky*

#### *State Winner \$1,000 Scholarship Sponsor*

*Steve and Merrie Lynn Vaughan*



### **Prepared Public Speaking Champion**

*State Winner \$1,000 Scholarship Sponsor*  
*AFR Cooperative*  
*National Qualifying Sponsors*  
*Davis Farms*  
*First National Bank of Thomas*

### **Agricultural Issues Forum**

*National Qualifying Sponsors*  
*The HANOR Company*  
*AFR Cooperative*  
*Oklahoma Kubota Dealers*

### **Employment Skills**

*National Qualifying Sponsors*  
*AFR Cooperative*  
*Blue Bell Creameries*  
*Oklahoma Kubota Dealers*  
*State Winner \$1,000 Scholarship Sponsor*  
*The University of Tulsa*

### **Greenhand Quiz**

*State Sponsor*  
*Farm Credit Associations of Oklahoma*

### **Opening and Closing Ceremony Contest**

*State Sponsor*  
*Masonic Charity Foundation*

### **Conduct of Chapter Meetings**

*State Sponsor*  
*Masonic Charity Foundation*

### **Parliamentary Procedure**

*State Sponsors*  
*Oklahoma Farm Bureau*  
*AFR Cooperative*  
*National Qualifying Sponsor*  
*CEV Multimedia*

## **CAREER DEVELOPMENT EVENTS**

### **Agricultural Communications**

*National Qualifying Sponsors*  
*Kent Gardner*  
*Oklahoma Farm Bureau*  
*High Individual \$1,000 Scholarship Sponsor*  
*Oklahoma Farm Bureau*

### **Agricultural Education Teaching**

*State Sponsors*  
*Chapman Ranch/Eric and Tracie Chapman*  
*High Individual \$1,000 Scholarship Sponsor*  
*Gateway First Bank*

### **Agricultural Sales**

*National Qualifying Sponsors*

*Pinpoint Monograms*

*Drs. Eric and Cheryl DeVuyst*

*High Individual \$1,000 Scholarship Sponsor*

*Carissa Taylor Memorial Trust*

### **Agricultural Technology and Mechanical Systems**

*National Qualifying Sponsors*

*Western Equipment LLC*

*Blue Bell Creameries*

*High Individual \$1,000 Scholarship Sponsor*

*Warren CAT*

*Second and Third High Individual Scholarships sponsored by*

*Oklahoma Kubota Dealers*

### **Agronomy**

*National Qualifying Sponsor*

*The Gooding Law Firm*

*in memory of Mr. Hal Gooding*

*High Individual \$1,000 Scholarship Sponsor*

*Milo Tea Company*

### **Animal Science Quiz Bowl**

*State Sponsors*

*McDonald's of Oklahoma*

*Genesis Enterprises LLC*

### **Dairy Cattle Management and Evaluation**

*National Qualifying Sponsor*

*CEV Multimedia*

*High Individual \$1,000 Scholarship Sponsor*

*Genesis Enterprises LLC*

### **Electricity**

*State Sponsors*

*Warren CAT*

*The University of Tulsa*

*National Electrical Contractors Association*

*High Individual \$1,000 Scholarship Sponsor*

*Public Service Company of Oklahoma*

*Second High Individual \$1,000 Scholarship Sponsor*

*National Electrical Contractors Association*

### **Entomology**

*State Sponsor*

*Energy Transfer*

*The Ag Ed Initiative*

*High Individual \$1,000 Scholarship Sponsor*

*Energy Transfer*



**Environmental and Natural Resources***National Qualifying Sponsors**AFR Cooperative**Georgia-Pacific**High Individual \$1,000 Scholarship Sponsor**Oklahoma Vegetation Management  
Association***Farm and Agribusiness Management***National Qualifying Sponsors**Oklahoma Chapter of the American  
Society of Farm Managers and  
Rural Appraisers**Choctaw Nation of Oklahoma**High Individual \$1,000 Scholarship Sponsors**Steve and Merrie Lynn Vaughan***Floriculture***National Qualifying Sponsors**The Chickasaw Nation**Energy Transfer**Oklahoma Kubota Dealers**High Individual \$1,000 Scholarship Sponsor**Tulsa State Fair***Food Science and Technology***National Qualifying Sponsors**The Chickasaw Nation**Blue Bell Creameries**Milo Tea Company**Oklahoma Kubota Dealers**National Qualifying Sponsor**Craig Sutton Memorial Trust**High Individual \$1,000 Scholarship Sponsor**Oklahoma FFA Alumni Association***Freshman Ag Science I Quiz Bowl***State Sponsors**Hofschulte Show Pigs**Energy Transfer***Homesite Judging***National Qualifying Sponsors**Oklahoma FFA Alumni Association**Energy Transfer**High Individual \$1,000 Scholarship Sponsor**AAON*

## FOURTH SESSION

### **Horse Evaluation**

*National Qualifying Sponsors*

*ICEV Multimedia*

*International Professional Rodeo  
Association & IFR*

*Oklahoma FFA Alumni Association*

*High Individual \$1,000 Scholarship Sponsor*

*Masonic Charity Foundation*

### **Land Judging**

*National Qualifying Sponsors*

*CEV Multimedia*

*Genesis Enterprises LLC*

*High Individual \$1,000 Scholarship Sponsor*

*Noble Research Institute*

### **Livestock Evaluation**

*National Qualifying Sponsor*

*L.E. Castle Scholarship Trust,  
sponsored by Farm Credit of Enid  
and Tyler and Beth Norvell*

*High Individual \$1,000 Scholarship Sponsor*

*Oklahoma Youth Expo*

### **Livestock Evaluation (second-place team)**

*American Royal Qualifying Sponsors*

*Bar A Inc./Randy and Deanna Abbott,  
Pryor, Okla.*

*Oklahoma FFA Alumni Association*

### **Marketing Plan**

*National Qualifying Sponsors*

*Amazon*

*Choctaw Nation of Oklahoma*

*High Individual \$1,000 Scholarship Sponsor*

*Vermeer Great Plains*

### **Meats Evaluation and Technology**

*National Qualifying Sponsors*

*ICEV Multimedia*

*Don Troub Memorial Trust*

*High Individual \$1,000 Scholarship Sponsor*

*Oklahoma Youth Expo*

### **Meats Evaluation and Technology (second-place team)**

*National Western Qualifying Sponsors*

*Masonic Charity Foundation of Oklahoma*



**Milk Quality and Products**

*National Qualifying Sponsors*

*Drs. Eric and Cheryl DeVuyst,*

*in memory of Eugene and Cecilia Sinn*

*Blue Bell Creameries*

*High Individual \$1,000 Scholarship Sponsor*

*Masonic Charity Foundation*

**Nursery/Landscape**

*National Qualifying Sponsors*

*The Chickasaw Nation*

*Oklahoma FFA Alumni Association*

*The University of Tulsa*

*Top Four High Individuals \$1,000 Scholarship  
Sponsor (\$4,000)*

*Blue Mountain Equipment & STIHL*

**Poultry Evaluation**

*National Qualifying Sponsor*

*ICEV Multimedia*

*High Individual \$1,000 Scholarship Sponsor*

*The Poultry Federation*

**Rangeland Judging**

*National Qualifying Sponsors*

*Oklahoma Society for Range Management*

*Energy Transfer*

*Oklahoma Kubota Dealers*

*High Individual \$1,000 Scholarship Sponsor*

*Noble Research Institute*

**Soil and Water**

*State Sponsor*

*Energy Transfer*

*High Individual \$1,000 Scholarship Sponsor*

*Energy Transfer*

**Turf Grass Management**

*State Sponsor*

*Vermeer Great Plains*

*High Individual \$1,000 Scholarship Sponsor*

*AAON*

**Veterinary Science**

*National Qualifying Sponsors*

*Phil and Linnie Berkenbile*

*The Ag Ed Initiative*

*High Individual \$1,000 Scholarship Sponsors*

*Phil and Linnie Berkenbile*

## FOURTH SESSION

### Single Teacher Sweepstakes Trophy

*Sponsor*

*Farm Credit Associations of Oklahoma*



### Multiple Teacher Sweepstakes Trophy

*Sponsor*

*Farm Credit Associations of Oklahoma*

### Commercial Cattle Grading

*State Sponsors*

*Tulsa Stockyards*

*Tulsa State Fair*

*Oklahoma Department of Agriculture*

### Livestock Handling Skills

*Hosted by*

*Tulsa Farm Show*

*State Sponsor*

*AFR Cooperative*

### National Qualifying Forestry

*Hosted by*

*Agriculture Department, Eastern Oklahoma*

*State College, Wilburton*

*National Qualifying Sponsor*

*Georgia-Pacific*

### Sporting Clays Event

*Junior Division*

*Senior Division*

*State Sponsors*

*Oklahoma City Gun Club*

*STEP Program, Oklahoma Department of*

*Wildlife Conservation*



**Special note:** All second- and third-place OSU teams may pick up their trophies from the award booth at the east entrance of the BOK Arena at the conclusion of the Interscholastic presentation.

### FFA Talent

*Sponsored by  
Arvest Bank*

**Izabel Pritchett, Salina**



### Official Business Session

Roll Call of Delegates in the Arena

Approve 2025 State FFA Degree Recipients

Final Election (if necessary)

- ▶ President
- ▶ Secretary
- ▶ Reporter

### Closing Ceremony

Announce Session Four Talent Finalist





# FFA ALUMNI SILENT AUCTION

Sponsored by the  
Oklahoma FFA Alumni Association



- ▶ You must be 16 years old and have a valid Oklahoma driver's license to participate in the auction.
- ▶ Please register and receive a buyer's number before placing a bid.
- ▶ Bids are accepted until Wednesday at 1:30PM. Auction ends at 2PM.
- ▶ Items must be paid for and secured Wednesday between 2PM and 4PM.
- ▶ Proceeds support:
  - Future Ag Ed Teacher Summer Academy and Scholarship program
  - OAETA Ag Teachers' Children Scholarship program

# STATE FFA *Convention*

## FIFTH SESSION

**Wednesday, May 7**

**1:00PM Pre-Show Media Wall**

*Sponsored by  
Warren CAT*

**Live Video Stream**

*Sponsored this session by  
Hilliary Communications  
ONEOK*

**1:15PM “Dear FFA” Video Series**

*Sponsored by  
Lopez Dorada*

**Pre-Show Talent Competition**

*Sponsored by  
Arvest Bank*

Jolie Marshall, Harrah  
Lauren Thomason, Burlington  
Adalee Howell, Moore



**State Officer Video**

*Sponsored by  
McDonald's of Oklahoma*

**Opening Ceremony**

*Sponsored by  
Oklahoma Farm Bureau*

**Laser Light Show**

*Sponsored by  
AFR Cooperative*

### Remarks



**Scott Nemecek**  
State FFA Adviser

### Honor Schools, Communities and Teachers of State FFA Officers

*Sponsored by  
Robert and Nikki Williams  
David, Jo Lynn and Alex Cash*

### Carl A. Anderson Innovator Awards *Stars Over Oklahoma*

Special Audiovisual Presentation

*Produced by  
Ron Hays, Director of Farm Programming,  
Radio Oklahoma Network*

### Area Star Plaques and \$500 Cash Awards

*Sponsored by  
Blue & Gold Sausage Co.  
Sirloin Club of Oklahoma  
Masonic Charity Foundation  
McDonald's Of Oklahoma  
Davis Farms  
The Chickasaw Nation  
Oklahoma Farm Bureau  
Noble Research Institute*



### State Star in Agriscience \$29,737 Scholarship and Governor's Trophy

*State Sponsor  
Carl C. Anderson Trust*

**State Star in Agricultural Placement  
\$29,737 Scholarship and Governor's Trophy**

*State Sponsor*

*Carl C. Anderson Trust*

**State Star in Agribusiness  
\$29,737 Scholarship and Governor's Trophy**

*State Sponsor*

*Carl C. Anderson Trust*

**State Star Farmer  
\$29,737 Scholarship & Governor's Trophy**

*State Sponsor*

*Carl C. Anderson Trust*

**FFA Talent**

*Sponsored by*

*Arvest Bank*

Addi McClary, Keota



**Masters of Beef Advocacy Winners**

*State Sponsor*

*Oklahoma Beef Council*

**Oklahoma Jr. Wheat Show Winners**

*State Sponsors*

*Oklahoma Wheat Commission*

*Oklahoma Wheat Research Foundation*

### 2025 STATE PROFICIENCY AWARD AND OTHER SPECIAL AWARD WINNERS

#### **Agricultural Communications**

##### *State Sponsors*

*Beanland Farms*

*John Zink*

*Garrett Yerigan*

*Oklahoma FFA Alumni Association*

**\$1,000 State Winner Scholarship**

##### *Sponsored by*

*Farm Credit of Western Oklahoma*

#### **Agricultural Education**

##### *State Sponsors*

*McDonald's of Oklahoma*

*OSU Agricultural Education Workgroup*

*The Ted Fariss Family*

**\$1,000 State Winner Scholarship**

##### *Sponsored by*

*Oklahoma CareerTech Foundation*

#### **Agricultural Mechanics Design and Fabrication**

##### *State Sponsors*

*Great Plains Kubota*

*Warren CAT*

**\$1,000 State Winner Scholarship**

##### *Sponsored by*

*The University of Tulsa*

#### **Agricultural Mechanics Repair and Maintenance Entrepreneurship**

##### *State Sponsors*

*Mustang Fuel Corporation*

*Oklahoma Natural Gas Company*

*Oklahoma Kubota Dealers*

**\$1,000 State Winner Scholarship**

##### *Sponsored by*

*Warren CAT*

#### **Agricultural Mechanics Repair and Maintenance Placement**

##### *State Sponsors*

*Danny & Shirla Geis*

*NextEra Energy*

*Warren CAT*

*Oklahoma Kubota Dealers*

**\$1,000 State Winner Scholarship**

##### *Sponsored by*

*NextEra Energy*



## **Agricultural Processing**

### *State Sponsors*

*Keith and Marlene Kisling*

*Peter and Annie Dillingham*

*John Zink*

**\$1,000 State Winner Scholarship**

### *Sponsored by*

*Generator Supercenter of Oklahoma*

## **Agricultural Sales Entrepreneurship**

### *State Sponsors*

*Redgate Beef*

*P&K Equipment*

*Generator Supercenter of Oklahoma*

**\$1,000 State Winner Scholarship**

### *Sponsored by*

*Farm Credit of Western Oklahoma*

## **Agricultural Sales Placement**

### *State Sponsors*

*Gateway First Bank*

*Great Plains Kubota*

**\$1,000 State Winner Scholarship**

### *Sponsored by*

*Reuter Equipment*

## **Agricultural Services**

### *State Sponsors*

*AFR Cooperative*

*Milligan Ventures*

**\$1,000 State Winner Scholarship**

### *Sponsored by*

*Texoma Custom Baling LLC*

## **Agriscience Research — Animal Systems**

### *State Sponsors*

*Tulsa State Fair*

*The University of Tulsa*

*Genesis Enterprises LLC*

**\$1,000 State Winner Scholarship**

### *Sponsored by*

*The University of Tulsa*

## **Agriscience Research — Integrated Systems**

### *State Sponsor*

*Amazon*

**\$1,000 State Winner Scholarship**

### *Sponsored by*

*Noble Research Institute*

### **Agriscience Research — Plant Systems**

*State Sponsors*

*Vermeer Great Plains*

\$1,000 State Winner Scholarship

*Sponsored by*

*The University of Tulsa*

### **Beef Production Entrepreneurship**

*State Sponsors*

*Annie Jo Gilbert*

*Genesis Enterprises LLC*

\$1,000 State Winner Scholarship

*Sponsored by*

*Steve and Merrie Lynn Vaughan*

### **Beef Production Placement**

*State Sponsors*

*Burtrum Cattle Company*

*Annie Jo Gilbert*

\$1,000 State Winner Scholarship

*Sponsored by*

*Cameron University*

### **Dairy Production Entrepreneurship**

*State Sponsors*

*Pieter and Anita Van der Laan*

*Dairy Max*

*Drs. Eric and Cheryl Devuyst,*

*in memory of Eugene and Cecilia Sinn*

*The Ag Ed Initiative*

\$1,000 State Winner Scholarship

*Sponsored by*

*Drs. Eric and Cheryl DeVuyst,*

*in memory of Eugene and Cecilia Sinn*

### **Dairy Production Placement**

*State Sponsors*

*Dairy Max*

*The Ag Ed Initiative*

*Sidwell Family*

\$1,000 State Winner Scholarship

*Sponsored by*

*Megan and Jake Fanning,*

*in memory of Eugene and Cecilia Sinn*

### **Diversified Agricultural Production**

*State Sponsors*

*Steve and Mindi Clark*

*Virgil and Renee Murray*

*Kurt and Debbra Murray*

*Jim and Carla Pilkington*

\$1,000 State Winner Scholarship

*Sponsored by*

*Nelda Matthews, in memory of Bill Matthews*

**Diversified Crop Production  
Entrepreneurship**

*State Sponsors*

*David and Linda Shepard  
Oklahoma Crop Improvement Association  
Texas Feed Fat Company Inc.  
The Ag Ed Initiative*

**\$1,000 State Winner Scholarship**

*Sponsored by  
Koch Fertilizer*

**Diversified Crop Production Placement**

*State Sponsors*

*Great Plains Kubota  
Radio Oklahoma Network*

**\$1,000 State Winner Scholarship**

*Sponsored by  
Gateway First Bank*

**Diversified Horticulture**

*State Sponsors*

*Oklahoma Horticulture Society  
Energy Transfer*

**\$1,000 State Winner Scholarship**

*Sponsored by  
Milo Tea Company*

**Diversified Livestock Production**

*State Sponsors*

*OKC West Livestock Market Inc.  
Lost Princess Cattle Co./Palace Drug  
Oklahoma Farm Bureau  
Jarrod and Megann Johnson*

**\$1,000 State Winner Scholarship**

*Sponsored by  
Noble Research Institute*

**Environmental Science and Natural Resource  
Management**

*State Sponsors*

*Ovintiv  
Northeast Asbestos Management Services*

**\$1,000 State Winner Scholarship**

*Sponsored by  
PSO Public Service Company of Oklahoma*

**Equine Science Entrepreneurship**

*State Sponsors*

*Choctaw Nation of Oklahoma  
Connors State College  
Danny and Shirla Geis*

**\$1,000 State Winner Scholarship**

*Sponsored by  
AAON*



## FIFTH SESSION

### Equine Science Placement

*State Sponsors*

*Choctaw Nation*

*Danny and Shirla Geis*

*Jordan and Dustie Baker*

**\$1,000 State Winner Scholarship**

*Sponsored by*

*Jordan and Dustie Baker*

### FFA Talent

*Sponsored by*

*Arvest Bank*

*Leah Taylor, Shattuck*



### Fiber and/or Oil Crop Production

*State Sponsor*

*Oklahoma Soybean Board*

**\$1,000 State Winner Scholarship**

*Sponsored by*

*Oklahoma Soybean Board*

### Forage Production

*State Sponsors*

*Farm Credit of Western Oklahoma*

*Lori Glazier*

*Texoma Custom Baling LLC*

**\$1,000 State Winner Scholarship**

*Sponsored by*

*Masonic Charity Foundation*

### Forest Management and Products

*State Sponsors*

*Georgia-Pacific*

*Comanche Home Center*

*Tony and Sheryl Kennedy*

**\$1,000 State Winner Scholarship**

*Sponsored by*

*Ovintiv*

## Fruit And Nut Production

*State Sponsors*

*Energy Transfer*

*Choctaw Nation of Oklahoma*

\$1,000 State Winner Scholarship

*Sponsored by*

*Masonic Charity Foundation*

## Goat Production

*State Sponsors*

*Pfeiffer Farms*

*Show Rite Feeds*

\$1,000 State Winner Scholarship

*Sponsored by*

*Great Plains Kubota*

## Grain Production

*State Sponsors*

*Oklahoma Wheat Commission*

*Rural Community Insurance Services*

*Sidwell Insurance Agency Inc.*

*Wheeler Brothers Grain Co.*

\$1,000 State Winner Scholarship

*Sponsored by*

*Oklahoma Wheat Commission*

## Landscape Installation

*State Sponsors*

*Blue Mountain Equipment & STIHL*

*Oklahoma Kubota Dealers*

*Vermeer Great Plains*

\$1,000 State Winner Scholarship

*Sponsored by*

*Georgia-Pacific*

## Nursery Operations

*State Sponsors*

*Oklahoma FFA Alumni Association*

*Oklahoma CareerTech Foundation*

*Oklahoma Kubota Dealers*

\$1,000 State Winner Scholarship

*Sponsored by*

*Vermeer Great Plains*

## Outdoor Recreation

*State Sponsors*

*Garrett Yerigan*

*John Zink*

*Great Plains Kubota*

\$1,000 State Winner Scholarship

*Sponsored by*

*John Zink*

### **Poultry Production**

#### *State Sponsors*

*Energy Transfer*

*Genesis Enterprises LLC*

*Masonic Charity Foundation*

*The Poultry Federation*

**\$1,000 State Winner Scholarship**

#### *Sponsored by*

*Masonic Charity Foundation*

### **Service Learning**

#### *State Sponsors*

*McClain County Farmers Union*

*AAON*

**\$1,000 State Winner Scholarship**

#### *Sponsored by*

*Chacey Schoeppel Wilcox*

### **Sheep Production**

#### *State Sponsors*

*McGolden Club Lambs*

*Oklahoma FFA Alumni Association*

*Ott Club Lambs*

*Warren Club Lambs*

**\$1,000 State Winner Scholarship**

#### *Sponsored by*

*Final Drive Photography*

### **Small Animal Production and Care**

#### *State Sponsors*

*Piedmont Vet Clinic/Dr. Rhys Cole*

*Dwight Stoddard*

*The Chickasaw Nation*

**\$1,000 State Winner Scholarship**

#### *Sponsored by*

*AAON*

### **Specialty Animal Production**

#### **State Sponsors**

*Autumn Williams*

*Gilbert & Sons Trucking/Randy and*

*Suzanne Gilbert*

*Glenn's Backhoe and Trenching Service LLC*

*Jarrod and Megann Johnson*

**\$1,000 State Winner Scholarship**

#### *Sponsored by*

*Masonic Charity Foundation*



## Specialty Crop Production

### State Sponsor

*American Plant Products & Services Inc.*

*Choctaw Nation of Oklahoma*

\$1,000 State Winner Scholarship

### Sponsored by

*Masonic Charity Foundation*

## Swine Production Entrepreneurship

### State Sponsors

*Show Rite Feeds*

*Oklahoma Career Tech Foundation*

*The Ag Ed Initiative*

\$1,000 State Winner Scholarship

### Sponsored by

*Oklahoma Pork Council*

## Swine Production Placement

### State Sponsors

*Oklahoma Pork Council*

*Essential Feeds*

*The Chickasaw Nation*

*The Ag Ed Initiative*

\$1,000 State Winner Scholarship

### Sponsored by

*Tulsa State Fair*

## Turf and Landscape Maintenance

### State Sponsors

*Rainmaker Sales Inc.*

*Blue Mountain Equipment & STIHL*

*The Ag Ed Initiative*

\$1,000 State Winner Scholarship

### Sponsored by

*Oklahoma Vegetation Management  
Association*

## Vegetable Production

### State Sponsors

*Oklahoma CareerTech Foundation*

\$1,000 State Winner Scholarship

### Sponsored by

*Masonic Charity Foundation*

## Veterinary Science

### State Sponsor

*AFR Cooperative*

\$1,000 State Winner Scholarship

### Sponsored by

*Masonic Charity Foundation*

### **Wildlife Production and Management**

#### *State Sponsors*

*Steve and Merrie Lynn Vaughan*

*The Chickasaw Nation*

\$1,000 State Winner Scholarship

#### *Sponsored by*

*Masonic Charity Foundation*

### **Chapter Secretary's Contest**

#### *State Sponsors*

*Dr. Robert Terry Family*

*AAON*

*McClain County Farmers Union #39*

\$1,000 State Winner Scholarship

#### *Sponsored by*

*Generator Supercenter of Oklahoma*

### **Chapter Reporter's Contest**

#### *State Sponsors*

*The Chickasaw Nation*

*Masonic Charity Foundation*

\$1,000 State Winner Scholarship

#### *Sponsored by*

*Chacey Schoepel Wilcox*

**Special note:** All proficiency award applications, Star portfolios, reporter and secretary books on display in the Career Show Awards Exhibit may be picked up at the conclusion of this session.

### **Closing Ceremony**

Announce Session Five Talent Finalist

Announce Career Show Talent Finalist



# STATE FFA *Convention*

## SIXTH SESSION

**Wednesday, May 7**

**5:45PM Pre-Show Media Wall**

*Sponsored by  
Warren CAT*

**Live Video Stream**

*Sponsored this session by  
Hilliary Communications  
P&K Equipment*

**6:00PM FFA Talent Competition Finals**

*Sponsored by  
Arvest Bank*



**FFA Talent Finalists**

Session One Talent Winner  
Session Two Talent Winner  
Session Three Talent Winner

**Recognize the top three chapters contributing  
to the Alumni Silent Auction**

*Sponsored by  
The Oklahoma FFA Alumni Association*

**FFA Talent Finalists**

Career Show Talent Winner  
Session Four Talent Winner  
Session Five Talent Winner

***God Bless America***

**Opening Ceremony**

*Sponsored by  
Oklahoma Farm Bureau*

**Laser Light Show**

*Sponsored by  
AFR Cooperative*

## SIXTH SESSION

### 23rd Anniversary "Built Ford Tough" Truck Giveaway *Sponsored by Oklahoma Ford Dealers*

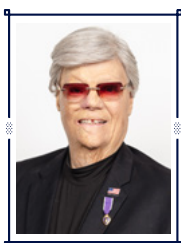


### PAST FORD TRUCK WINNING CHAPTERS

<b>2002</b>	<b>Achille</b>	<b>:</b>	<b>2014</b>	<b>Coalgate</b>
<b>2003</b>	<b>Amber-Pocasset</b>	<b>:</b>	<b>2015</b>	<b>Wellston</b>
<b>2004</b>	<b>Drummond</b>	<b>:</b>	<b>2016</b>	<b>Elk City</b>
<b>2005</b>	<b>Guymon</b>	<b>:</b>	<b>2017</b>	<b>Purcell</b>
<b>2006</b>	<b>Stroud</b>	<b>:</b>	<b>2018</b>	<b>Owasso</b>
<b>2007</b>	<b>Guthrie</b>	<b>:</b>	<b>2019</b>	<b>Carney</b>
<b>2008</b>	<b>Oklahoma Union</b>	<b>:</b>	<b>2021</b>	<b>Jay</b>
<b>2009</b>	<b>Thomas-Fay-Custer</b>	<b>:</b>	<b>2022</b>	<b>Okmulgee</b>
<b>2010</b>	<b>Edmond</b>	<b>:</b>	<b>2023</b>	<b>Strother</b>
<b>2011</b>	<b>Claremore</b>	<b>:</b>	<b>2024</b>	<b>Cashion</b>
<b>2012</b>	<b>Snyder</b>	<b>:</b>	<b>2025</b>	<b>?????</b>
<b>2013</b>	<b>Roland</b>			

### Keynote Speaker

*Sponsored by  
AFR Cooperative  
BancFirst  
Chickasaw Nation  
CM Truck Beds  
Express Employment Professionals  
of Oklahoma  
John Zink  
Muscogee Creek Nation  
Oklahoma Ford Dealers  
Springdale Tractor Co. of Tulsa*



**Dave Roever**  
Wounded Warrior



### **Announce State Convention Talent Winner**

\$1,000 State Winner Scholarship

*Sponsored by*

*Arvest Bank*

### **“Dear FFA”**

*Sponsored by*

*Lopez Dorada*

### **State FFA Degree Ceremony**

#### **State Degree Charms**

*Sponsored by*

*Oklahoma Farm Bureau*

*Lauren McDonald with Midwest Land Group*

#### **State Degree Plaques**

*Sponsored by*

*Shawnee Milling Company*

*Koch Fertilizer*

#### **State Degree Academic Excellence Recognition**

*Sponsored by*

*AFR Cooperative*

*Jay and Stephanie Jenlink,*

*Representing PRIMERICA*

*Lee and Becky Schnaithman,*

*Representing PRIMERICA*

*Mike and Donna Robison*

#### **FFA Talent**

Talent Winner

*Sponsored by*

*Arvest Bank*

#### **State Officer Team Flashback**

#### **Presentation of the 2025-2026**

**State FFA Officers**

#### **New Officer Briefcases, Padfolios and Garment Bags**

*Sponsored by*

*Scott and Melissa Eisenhauer,*

*in Memory of Justin Whitefield*

*Gilbert & Sons Trucking/Randy and*

*Suzanne Gilbert*

*Bo and Holly Blakey*

#### **Closing Ceremony**



Kayla Poling State FFA President

Calder Amers  
Southwest Area  
Vice President

Cope Klein  
State FFA Secretary

Casyn Larson  
Northwest Area  
Vice President

Aubrie McIntosh  
state FFA reporter

Anne Hollis  
Northeast Area Vice President

Grace Wright  
Central Area Vice President

Liter Montgomery  
Southeast Area Vice President

# LEADERSHIP Workshops

Arvest Convention Center, Conference Hall A-B

*Sponsored by*

AAON  
Cimarron Trailers  
Enel North America Inc.  
Fred and Leesa Stanley  
Georgia-Pacific  
Great Plains Kubota  
Invenergy  
Tobacco Settlement Endowment Trust  
(TSET)

## Making an Impact for Agriculture with a Q&A Session with Gatlin Didier

**Gatlin Didier**  
**Tuesday 1:15PM**

Join Gatlin Didier for an engaging workshop designed to empower FFA members to become effective advocates for agriculture. He will be taking any and all questions about social media, agriculture, story-telling, entertainment and his direct-to-consumer beef enterprise, Didier Ranch. This workshop will be interactive, fun and very educational for anyone who has wondered if they can make an impact locally or globally through social media. Join Gatlin, Granny and Jarrett Sitton (Gate Bart) for a rare occasion from the real side of their operation.



## Member to Member: Building a Winning POA and National Chapter Award Application

**Meeker FFA**  
**Tuesday 2:15PM**

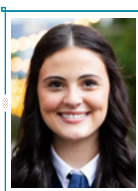
Curious about what it takes to achieve national recognition for your chapter? Members of the Meeker FFA Chapter are here to share their insights on the National Chapter Award Program. This workshop will cover the essentials of building a successful Program of Activities that showcases your chapter's strengths, engages members and serves your community. From creating impactful activities to documenting your chapter's achievements, learn the steps to apply for the National Chapter Award and potentially earn the Model of Excellence distinction. Join us to gain practical strategies and inspiration to take your chapter to new heights. Ag teachers, don't miss the chance to jump in and sharpen your skills too.

## LEADERSHIP WORKSHOPS

### Roots of Leadership: Learning from Agriculture's Game Changers

**Hunter Lawson and Kasadi Neel**  
**Tuesday 4:00PM**

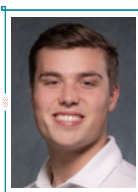
Hear inspiring stories and key leadership lessons from influential figures in agriculture past and present. Explore how leaders in agriculture made an impact, the traits that led to their success, and challenge themselves to discover how they can apply these lessons to make their lasting contributions.



### Aspire to Inspire: Your Path to Becoming a State FFA Officer

**Caleb Horne and Alec Anderson**  
**Wednesday 10:30AM**

Join these former state FFA officers for an insider's look at what it takes to serve in one of the most impactful roles in FFA. Go through the journey of becoming a state officer, from setting goals and preparing for candidacy to navigating the responsibilities and rewards of leadership on the state level. Learn valuable insights and practical tips on how to inspire others, represent FFA at the highest level, and create a legacy of service.



### Member to Member: Competing in Conduct of Chapter Meetings and Senior Parli Pro

**Lomega and Edmond FFA Chapters ▶ Wednesday 1:00PM**

Join members from the Edmond and Lomega FFA chapters as they guide you through the fundamentals of the Conduct of Chapter Meetings and Senior Parliamentary Procedure contests. Learn essential techniques, practice key motions, and discover strategies to prepare effectively for success. Whether you're a beginner or looking to sharpen your competitive edge, this session will provide you with the tools to lead any meeting with confidence and precision. Ag teachers are welcome too.

### Engage!

**Jack Lingenfelter ▶ Wednesday 4:00PM**

Great leaders don't just participate. They actively engage. In this workshop, Jack Lingenfelter, the National FFA Southern Region vice president, will inspire FFA members to embrace connection and take meaningful action as they grow into their leadership potential.



# CAREER SUCCESS *Workshops*

Arvest Convention Center, Conference Hall C-D

*Sponsored by*

Great Plains Kubota  
Invenergy  
Matthew 25:40 Mission Scholars  
Wes and Lou Watkins  
McDonald's of Oklahoma  
National Livestock Credit Corp.

## Become a STAR: Shaping Tomorrow's Leaders Through Ag Education

Oklahoma State Teach Ag  
Results Committee  
Tuesday 1:30PM



FFA members, do you have a passion for agriculture and FFA and a desire to inspire the next generation? Learn about the opportunities, growth and community that come with being an agriculture instructor, and see how you can become a guiding light for future leaders. Discover a career that's more than a job — it's your chance to make a difference.

## OSU Veterinary Medicine: Pathways to Growth and Compassionate Care

OSU Veterinary College  
Tuesday 2:30PM



FFA members, are you passionate about animal health and looking for a career where you can make a difference? Join us for an inside look at Oklahoma State University veterinary medicine, where your talents and dedication can lead to a rewarding career in veterinary science. From hands-on roles such as veterinary technicians, researchers and animal care specialists to supportive roles in administration, client care, and medical technology, discover a path that aligns with your skills and passion. Step into a future where your career is not only a choice but a journey to lifelong impact.

## Exploring Food Science: From Farm to Fork

Dr. Ranjith Ramanathan ▶ Tuesday 4:00PM

Dive into the exciting world of food science with experts from the Oklahoma State University food science program. This interactive workshop will explore the journey of food from production to consumption, highlighting the science and technology behind creating safe, nutritious and delicious food products. Whether you're curious about food safety, product development or the science behind your favorite snacks, this session is for you.



## CAREER SUCCESS WORKSHOPS

### Building Brands, Growing Futures

Invenergy

Wednesday 9:45AM

Join us for an exploration of career paths at Invenergy, a global leader in sustainable energy solutions. With roles ranging from field technicians and engineers to project managers and environmental analysts, Invenergy offers opportunities to drive positive change through innovative wind, solar and energy storage projects. Discover a career that's not only about growth but also about making a meaningful impact on our planet. Embrace the chance to power a cleaner, more sustainable future with Invenergy.

Invenergy

### Building Brands, Growing Futures

Made in Oklahoma Program

Wednesday 11:00AM

Calling all FFA members with an entrepreneurial spirit. Discover how the Made in Oklahoma program empowers local producers, growers and manufacturers to bring unique products to market. Learn how your SAE can evolve into a thriving business with the "Made in Oklahoma" label, unlocking resources to grow your impact and contribute to Oklahoma's vibrant economy.



### Powering Lives, Empowering Communities

Oklahoma's Electric Cooperatives

Wednesday 1:30PM

Oklahoma's electric cooperatives are not-for-profit utilities that bring power to more than 523,000 Oklahomans. Have you ever considered a rewarding career that brings power to farmers, ranchers, rural Oklahoma communities and even remote villages in Guatemala? If the answer is yes, consider becoming a part of the cooperative family. In this workshop, you will have a blast exploring the cooperative difference and vast number of career benefits and opportunities waiting for you.



OKLAHOMA'S ELECTRIC  
COOPERATIVES

### Ag Economic Development and Youth Loan Opportunities



Farm Service Agency  
U.S. DEPARTMENT OF AGRICULTURE

United States Department of Agriculture

Wednesday 3:00PM

FFA members, are you interested in launching or expanding your Supervised Agricultural Experience project? Discover how the Department of Ag Economic Development and Agriculture Markets and USDA can support your ambitions through specialized youth loan programs tailored for rural students. This workshop will guide you through available loan options and the application process and explain how these resources can help fund livestock projects, crop production, agribusiness ventures and more. Take the first step toward achieving your agricultural goals and learn how these programs can turn your project dreams into reality.

# OKLAHOMA FFA FOUNDATION 2025 SPONSORSHIP PROGRAM

## State Convention Title Sponsors Platinum Level \$50,000+

Devon Energy  
Express Employment Professionals  
Masonic Fraternity  
Oklahoma Farm Bureau  
Oklahoma Ford Dealers  
Oklahoma Kubota Dealers  
Ovintiv  
Public Service Company of Oklahoma



## State Convention Title Sponsors Diamond Level \$25,000+

AFR Cooperative  
Blue & Gold Sausage Co.  
Farm Credit Associations of Oklahoma  
Invenergy  
McDonald's  
NextEra Energy  
The University of Tulsa



## Gold Level Sponsors \$17,500+

AAON  
Koch Fertilizer/Georgia-Pacific/John Zink Hamworthy  
Combustion  
Oklahoma FFA Alumni Association  
Trusted Choice — Independent Insurance Agents of  
Oklahoma

## Silver Level Sponsors \$10,000+

Amazon	Cherokee Nation
Chickasaw Nation	Choctaw Nation of Oklahoma
Cimarron Trailers	Enel
Energy Transfer	Genesis Enterprises LLC
Great Plains Kubota	Muscogee Creek Nation
Matthew 25:40 Mission Scholars — Wes and Lou Watkins	
Noble Research Institute	ONEOK
Oklahoma Association of Electric Cooperatives	
Oklahoma Department of Wildlife Conservation	
P&K Equipment	Warren CAT

# OKLAHOMA FFA FOUNDATION 2025 SPONSORSHIP PROGRAM

## ~~~~~ Bronze Level Sponsors ~~~~~ \$5,000+

Blue Mountain Equipment & STIHL  
CEV Multimedia  
The Craig Foundation  
Dorada Foods  
Drs. Eric and Cheryl DeVuyst  
Generator Supercenter of Oklahoma  
Gilbert & Sons Trucking/Randy and Suzanne Gilbert  
Hilliary Communications  
ITC Great Plains  
Lopez Dorada  
LSB Industries  
Marathon Oil Company  
Oklahoma Auctioneer Association  
Oklahoma Beef Council  
Oklahoma FFA Foundation President's Club  
Oklahoma Wheat Research Foundation  
OSU Ferguson College of Agriculture  
Phil and Linnie Berkenbile  
Shawnee Milling Company  
Steve and Merrie Lynn Vaughan  
T&D Meats  
Vermeer Great Plains  
Western Equipment LLC

## ~~~~~ Presidential Level Sponsors ~~~~~ \$2,500+

Arvest Bank  
Associated Electric Cooperative  
BancFirst  
Blue Bell Creameries  
Brady Womack/B-5 Show Supplies  
Cattlemen's Choice Insurance  
Chapman Ranch  
CM Truck Beds  
Davis Farms  
Diamond Hats  
Farm Credit of Western Oklahoma  
Gateway First Bank  
Hanza's MICROBIOTA+  
Koch Fertilizer  
Martindale Feed Mill  
MFA Oil  
Milo Tea Company  
Oklahoma Agricultural Education Teachers Association  
Oklahoma Army National Guard  
Oklahoma CareerTech Foundation  
Oklahoma Pork Council  
Oklahoma Steel & Wire  
Oklahoma Wheat Commission  
Sundowner Trailers  
Springdale Tractor Co. of Tulsa  
The Ag-Ed Initiative  
Tulsa State Fair





**Enel Green P  
Oklahoma F  
of leaders th**

**About Enel in Oklahoma:** As the largest producer of wind power in Oklahoma, we are a top-five producer of wind power in 14 counties statewide. We believe in Oklahoma and the power of a diverse energy portfolio.



The background of the entire page is a photograph of two brown horses standing in a field of tall, dry grass under a blue sky with light clouds. The horses are facing left, with one slightly ahead of the other.

**Power is proud to partner with  
FA to develop the next generation  
through agricultural education**

ma, Enel Green Power is heavily invested in our state and our communities. e taxpayer in eight counties and are proud to be the No. 1 taxpayer in five ergy future. For more information, visit [enelgreenpower.com](http://enelgreenpower.com)

# SAYING *Thank You*



FFA members:

Please don't forget to write those thank you letters or notes to your sponsors. Your follow-up is vitally important to their continued support of FFA.

You will find the address of every State FFA Convention sponsor on our website at **www.okffa.org**. Go to **Participate/State Convention** and click on **2025 Thank You List**.

If you can't find an address, please give us a call at the state FFA office at 405-743-5498. We'll be glad to get it for you.

Congratulations on your success, and thanks for doing your part to see that future FFA members have the same or even greater opportunities.

# SPECIAL Acknowledgment

## **State FFA Convention General Financial Support**

*Provided by*

*AAON*

*AFR Cooperative*

*Amazon*

*BancFirst*

*Blue & Gold Sausage Co.*

*Carl Laubach Family*

*Chickasaw Nation of Oklahoma*

*Choctaw Nation of Oklahoma*

*Cimarron Trailers*

*Drs. Eric and Dr. Cheryl DeVuyst*

*Enel North America Inc.*

*Energy Transfer*

*Express Employment Professionals of Oklahoma*

*Farm Credit Associations of Oklahoma*

*Generator Supercenter of Oklahoma*

*Genesis Enterprises LLC*

*Gilbert & Sons Trucking/Randy and Suzanne Gilbert*

*Great Plains Kubota*

*Hanza's MICROBIOTA+*

*Invenergy*

*ITC Great Plains*

*Koch Fertilizer*

*Masonic Charity Foundation of Oklahoma*

*McDonald's*

*MFA Oil*

*Muscogee Creek Nation*

*NextEra Energy*

*Noble Research Institute*

*Oklahoma Chapter of the American Society of Farm  
and Managers and Rural Appraisers*

*Oklahoma Association of Electric Cooperatives*

*Oklahoma Farm Bureau*

*Oklahoma Ford Dealers*

*Oklahoma Pork Council*

*ONEOK*

*Ovintiv*

*P&K Equipment*

*PSO Public Service Company of Oklahoma*

*T&D Meats*

*The University of Tulsa*

*Trusted Choice IIAO*

*Vermeer Great Plains*

*Warren CAT*

*Western Equipment*

## **State Convention Media Room**

*Managed by*

*OSU Agricultural Communications Department and ACT*

# STATE FFA CONVENTION *Staff*

## COORDINATION

Trevor Lucas

*Director*

Denisha Garner

*Arvest Convention Center*

*Coordinator*

Sarah Rhoades

*BOK Arena Coordinator*

## BACKSTAGE/VIP SEATING

Emily Worrell

*Co-Director*

Jimmy Hutson

*Co-Director*

Greg Black

Amber Moser

Whitney Wilkinson

Braden Burns

Presley Pullen

Hayden Harper

*VIP Seating Manager*

Trinity Blosch

*VIP Seating*

Trey Myers

*Stage Manager*

Pedro Valles

*Talent Emcee*

Abby Bell

*Arena Talent Manager*

## COURTESY CORPS

David Turner

*Director*

Ella Hasselbring

Brynna Raines

Alyssa Henry

Emory Schulz

Ty McCorkle

Kendra Medders

Jayce Jaresh

Olivia Ward

Neilee Guinn

Riley Alexander

Randon Folsom

Kristian Pouncil

Nathan Kraft

Kaylee Dever

Lindsey Scherer

Kayden Alford

Brock Dixon

Cassidy Lamborn

Cade Claycomb

Erynn Allison

Kailee Macy

## ARENA TECHNICAL

Kelly Barnes

*General Sessions and*

*Talent Director*

Dylan Francis

*Director, Lights and*

*Sound*

Kyle Bartel/TITAN

*Audio Visual*

John Coodey

*Laser Director*

Garrett Yerigan

*Introductions and Awards*

Kalee Tacker

*Secretary Station Director*

Kari Cooper/Final Drive

*Photographer*

Justin Dewbre

*Photographer*

Dusty Oldenburg

*Photographer*

## WORKSHOPS/SPEAKERS/ ENTERTAINERS

Jason Wetzler

*Director*

Luke Rozell

Braden Hamilton

## SPEAKING FINALS

Allen Miller

*Director*

Kyla Taylor

*Emcee (Tuesday)*

Emily Beaner

*Timekeeper (Tuesday)*

## REGISTRATION

Kathie Short

*Director*

Laura Berger

*Assistant Director*

## MEAL FUNCTIONS

Rose Bonjour

Hanna Brown

*Co-Directors*

Kyla Taylor

Emily Beaner



## CAREER SHOW

Clark Long  
Director  
Corbin Potter  
*Event 1 Decorating Service*  
Kylee Falasco  
*Talent Stage/Music Coordinator*  
Hunter Duke  
*Assistant Talent Stage/Music Coordinator*  
Brady Womack  
*Alumni Silent Auction Co-Manager*  
Bradley Womack  
*Alumni Silent Auction Co-Manager*  
Charles Arthur  
*Alumni Silent Auction Co-Manager*  
Wayne Stricklin  
*Alumni Silent Auction Co-Manager*  
Garrett Case  
*Alumni Silent Auction*  
Pinpoint Monograms  
*Director/OKFFA Gear Store*  
Jacey Fye  
*FFA Foundation Executive Director*

## CHORUS

Kurt Murray  
Director  
Colte Julian  
*Chorus Director*  
Daymon Sherin  
*Assitant Director*  
Eva Cole  
*Accompanist/ Collaborative Artist*  
Tucker Leathers  
*Chorus Intern*  
Jim Pilkington  
Melinda McPherson  
Jaymi Chambless  
*Chaperones*

## AGRISCIENCE FAIR

Amanda Hutson  
Manager

## MEDIA ROOM

Shelly Legg  
Dwayne Cartmell  
*Co-Directors*

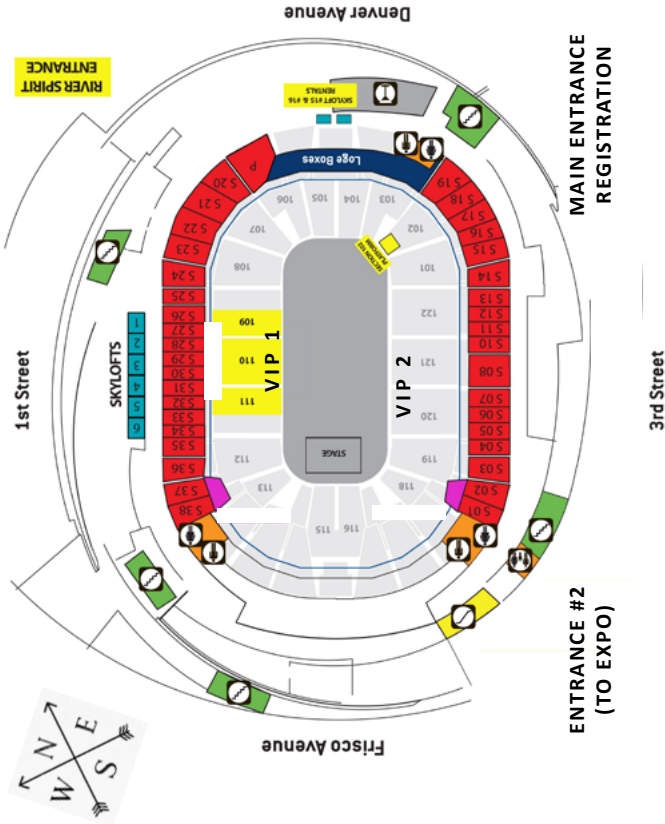
## STATE OFFICER ELECTIONS

Dwight Stoddard  
Director  
Norman Filtz  
Kent Boggs  
Lyle Jerome

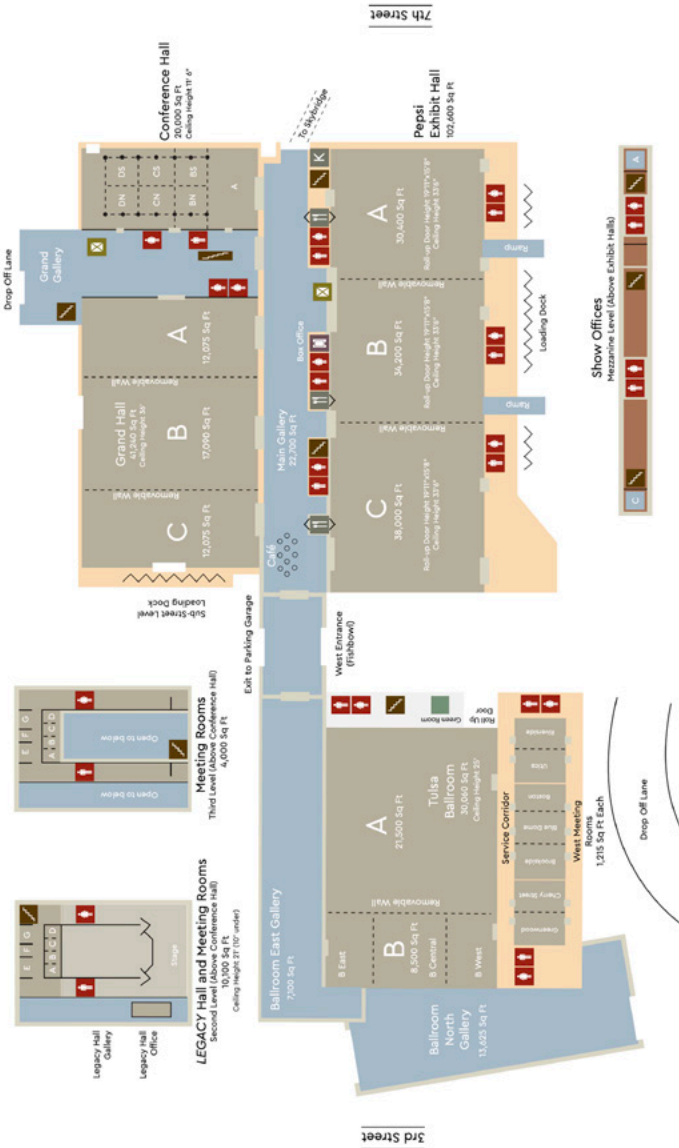
## CONCERT

Jason Wetzler  
Director  
Abby Bell  
Alyssa Henry  
Braden Burns  
Braden Hamilton  
Brock Dixon  
Brynna Raines  
Cade Claycomb  
Cassidy Lamborn  
Ella Hasselbring  
Emily Beaner  
Emory Schulz  
Erynn Allison  
Garrett Case  
Hayden Harper  
Hunter Duke  
Jayce Jaresh  
Kailee Macy  
Kayden Alford  
Kaylee Dever  
Kendra Medders  
Kristian Pouncil  
Kylee Falasco  
Kyla Taylor  
Lindsey Scherer  
Luke Rozell  
Nathan Kraft  
Neilee Guinn  
Olivia Ward  
Pedro Valles  
Randon Folsom  
Riley Alexander  
Trinity Blosch  
Trey Myers  
Ty McCorkle

# BOK Arena



# ARVEST CONVENTION Center



# CAN I HAVE YOUR *Autograph?*

---

A member from another chapter

---

An FFA adviser (but not your own)

---

A State Officer candidate from your area

---

Someone wearing an FFA jacket for the first time

---

Someone who is attending Alumni Leadership Camp this summer

---

An exhibitor at the Expo representing a career or school of interest



# GROW

## THE MESSAGE OF SAFETY

Whether you are planting or moving equipment, be sure overhead power lines are not in your path.

Stay at least 10 feet away.

*Look up and live.*

Learn more:

*[bit.ly/FarmSafety\\_MF](https://bit.ly/FarmSafety_MF)*



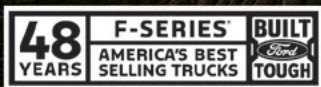
*Scan the QR code to listen to our farm safety podcast.*



OKLAHOMA'S ELECTRIC  
COOPERATIVES

Members 1<sup>st</sup>  
[www.MembersFirst.coop](http://www.MembersFirst.coop)

# *Lainey* PURE COUNTRY



For generations, Ford F-Series® trucks have been an important part of life in the country. Because hard work, commitment and doing things the right way are all values that have long been the standard for F-Series - and the folks who drive them.

**Best in**  
Oklahoma



Based on 1977-2024 CY industry-reported total sales.